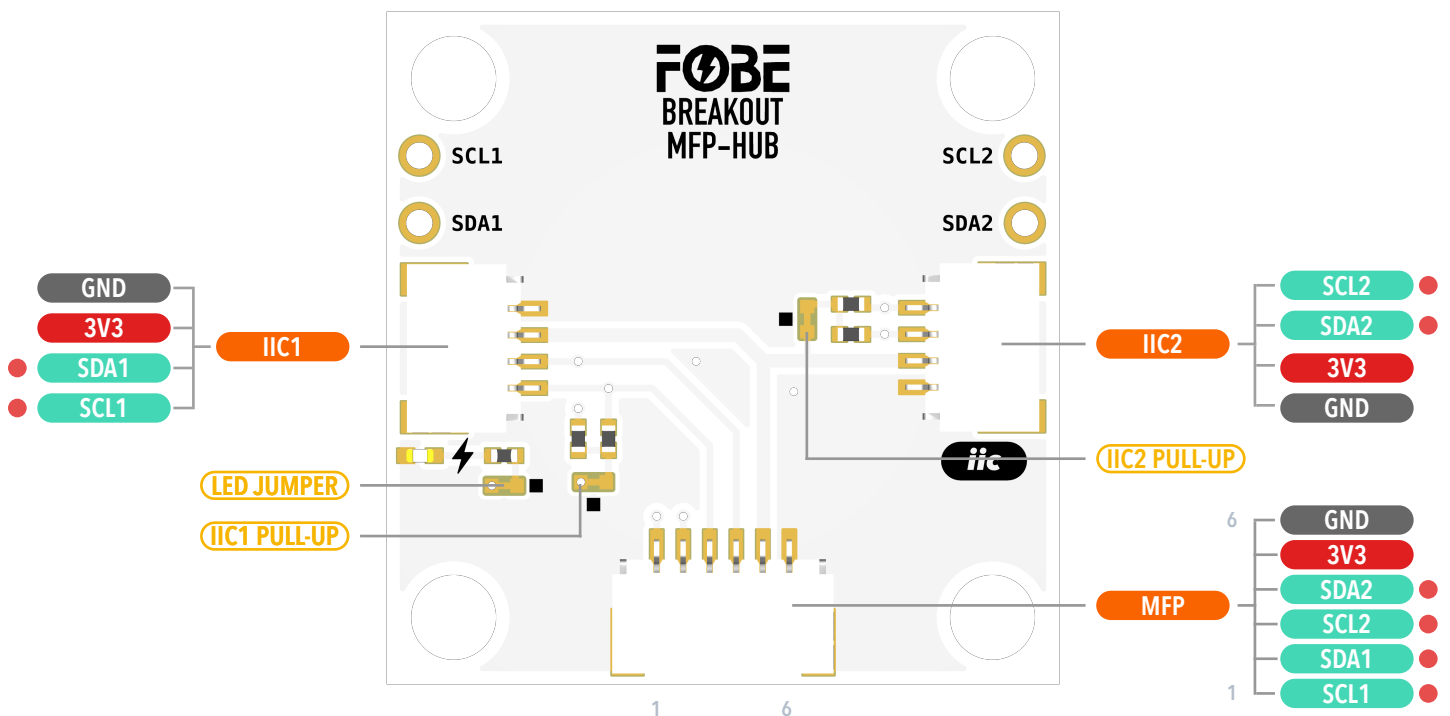


Breakout MFP-HUB

MFP-IIC Connector

- 3.3V IO Operating Voltage
- ⚡ Jumper Pads
- ⚡ Interface
- ⚡ Voltage
- ⚡ Function Pin



IIC1/IIC2 PULL-UP: Disconnect this jumper to disable I2C pull-up resistors if external pull-ups are used

LED JUMPER: Disconnect this jumper to turn off the power LED for further power saving

Copyright © 2020-2025 FoBE Studio

Breakout MFP-HUB

MFP-IIC Connector

