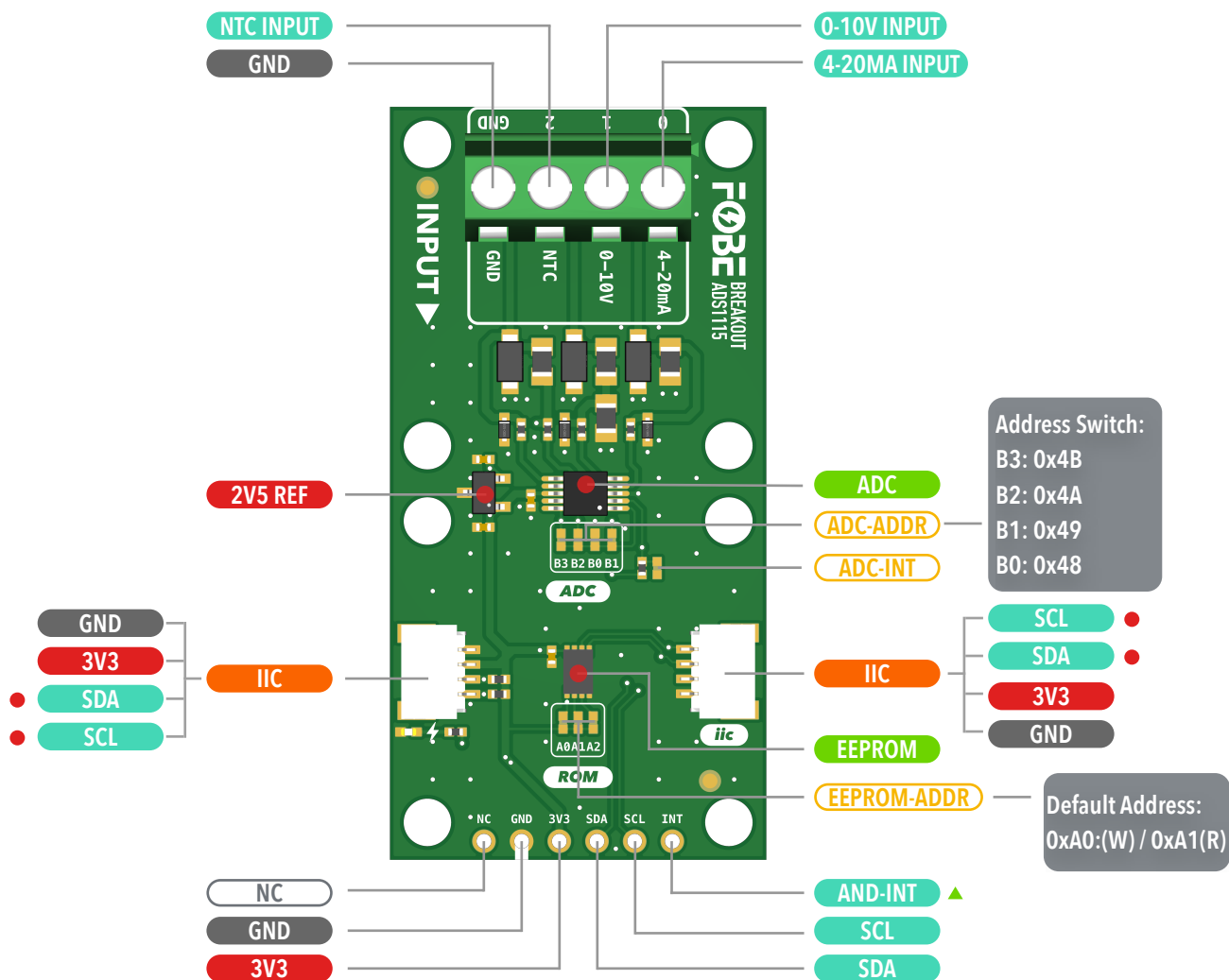


# Breakout ADS1115

## 16Bit Analog Measurer

- ▲ Active High
- 3.3V IO Operating Voltage
- ⏏ Jumper Pads
- ⏏ Interface
- ⏏ Voltage
- ⏏ Function Pin
- ⏏ IC



4-channel 16-bit ADC converter

Built-in 2V5 reference voltage

The 4-20mA measured a voltage by a 120Ω resistor to ground, sampled by ADC channel 0.

The 0-10V is measured through a voltage divider consisting of 10 KΩ (top) and 39 KΩ (bottom), sampled by ADC channel 1.

The NTC is measured by a voltage divider circuit, configured with a 100kΩ resistor and powered by an internal 2.5V reference, sampled by ADC channel 2.

The last ADC channel connect the reference voltage.

ADC-INT: Soldering to enable the ADC-INT function

Copyright © 2020-2025 FoBE Studio

# Breakout ADS1115

16Bit Analog Measurer

