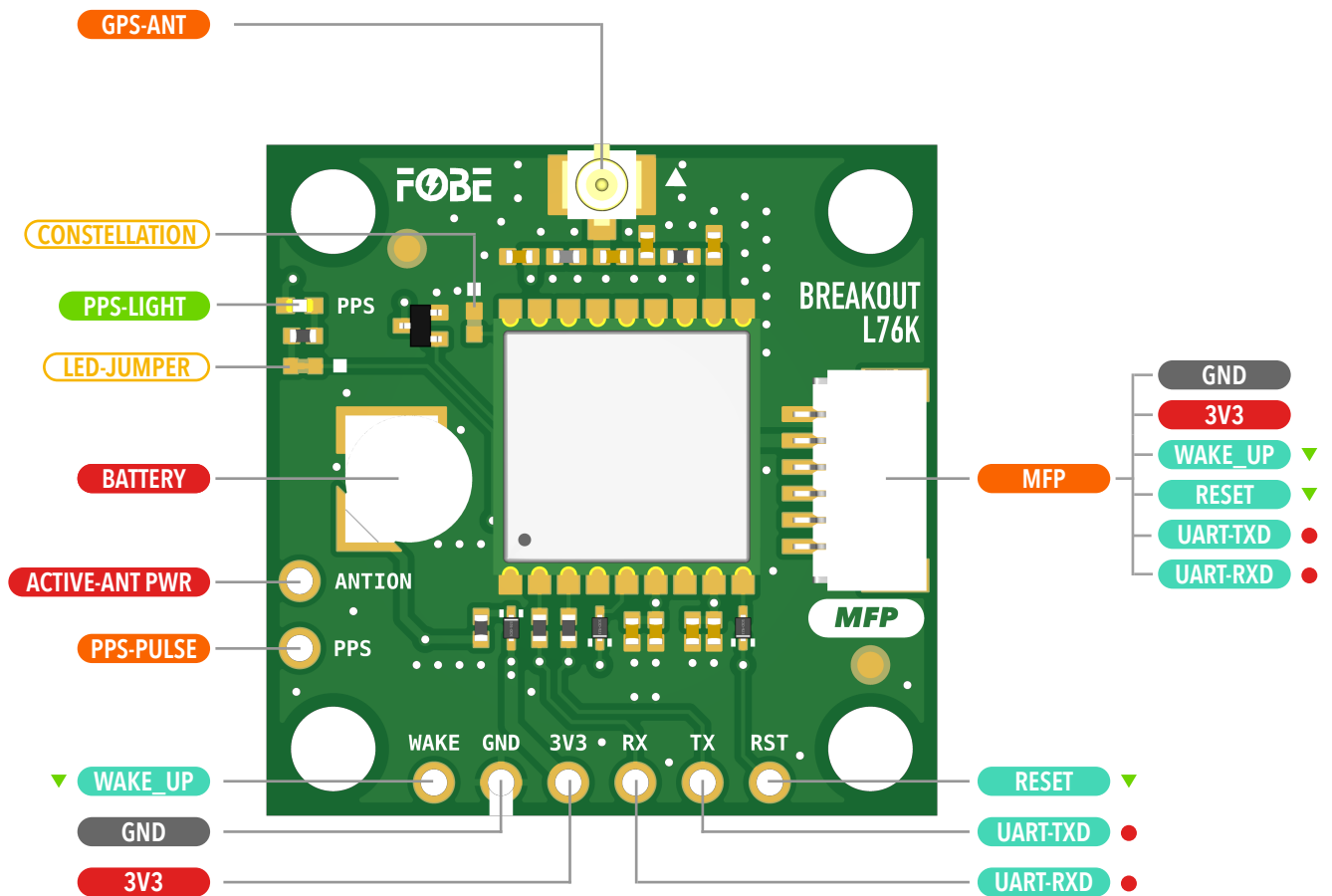


Breakout L76K

GNSS/GPS Location Module

- ▼ Active Low
- 3.3V IO Operating Voltage
- ⏏ Jumper Pads
- ⏏ Interface
- ⏏ Voltage
- ⏏ Function Pin
- ⏏ IC



BATTERY : Build-in 3.1V Rechargeable Button Cell Battery for Data Retention

CONSTELLATION: Soldering to use: GPS + GLONASS; Default is BeiDou + GPS

LED-JUMPER: Physically cut the Jumper to close the PPS-LIGHT and save power

PPS-PULSE: Outputs a pulse per second, works concurrently with the PPS LED, but not affected by JP2

ACTIVE-ANT PWR: Connected to 3V3 If using an active antenna.

Copyright © 2020-2025 FoBE Studio

Breakout L76K

GNSS/GPS Location Module

