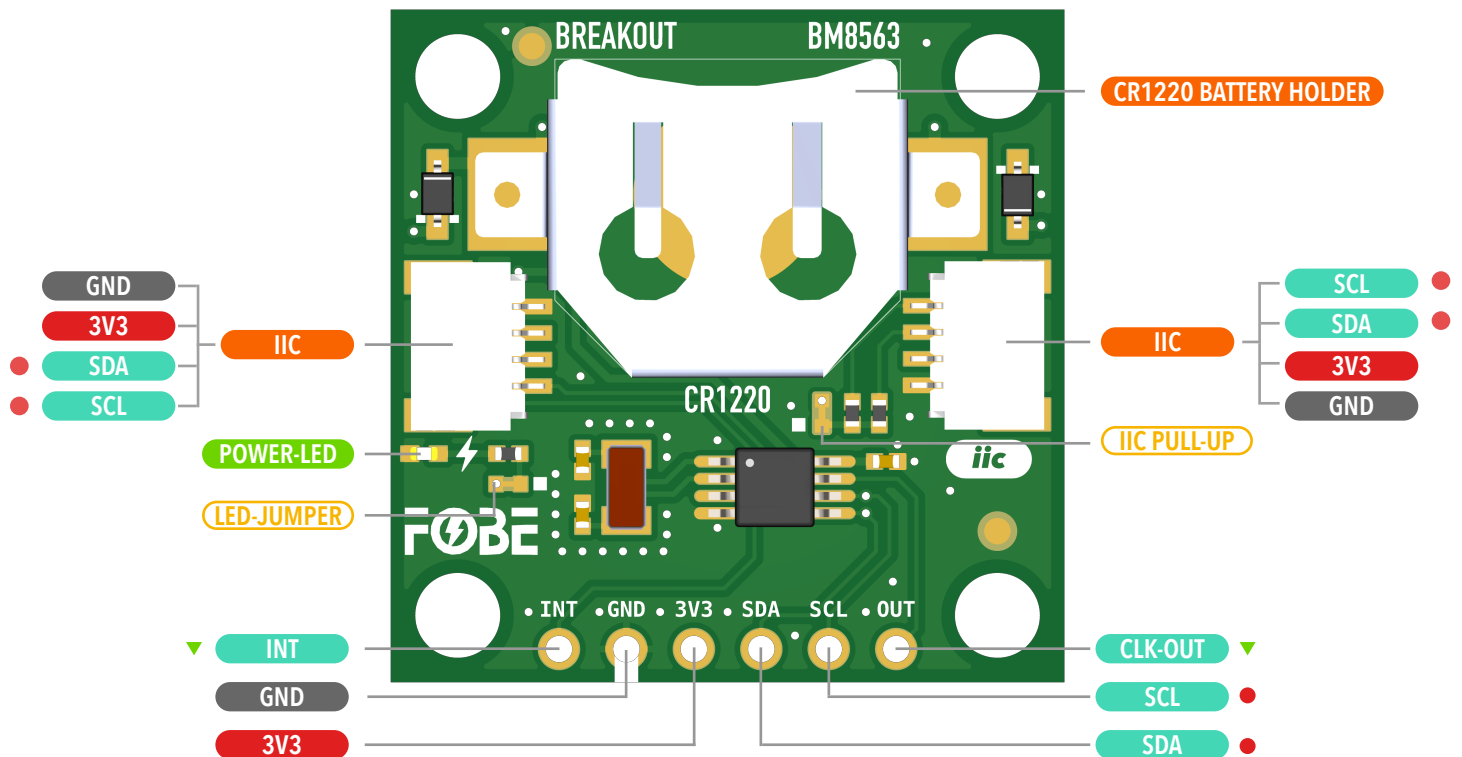


Breakout BM8563

RTC Module

- ▼ Active Low
- 3.3V IO Operating Voltage
- ⌚ Jumper Pads
- ⌚ Interface
- ⌚ Voltage
- ⌚ Function Pin
- ⌚ IC



INT: Trigger when the programmed timing conditions are met

CLK-OUT: Can output programmable square wave

IIC PULL-UP: Default pull-up sda/scl, if pull-up is not required, cut off the jumper

LED-JUMPER: Physically cut the Jumper to close the LED and save power

The two I2C connectors are wired in parallel to the same bus.

Copyright © 2020-2025 FoBE Studio

Breakout BM8563

RTC Module

