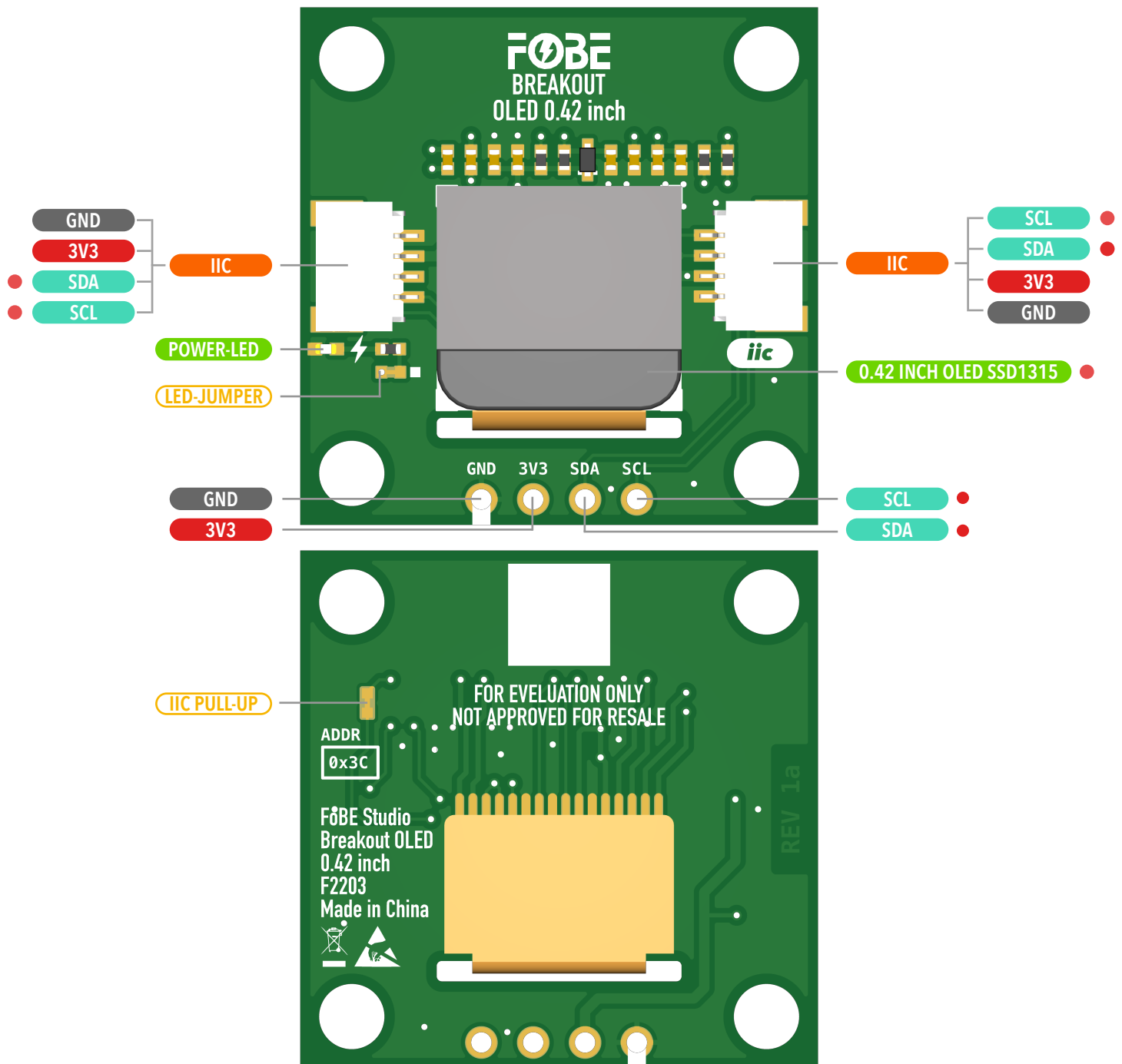


# Breakout OLED 0.42 inch

0.42 inch SSD1315 Oled Module

- 3.3V IO Operating Vlotage
- ⏏ Jumper Pads
- ⏏ Interface
- ⏏ Voltagle
- ⏏ Function Pin
- ⏏ IC



IIC PULL-UP: Default pull-up sda/scl, if pull-up is not required, cut off the jumper

LED-JUMPER: Physically cut the Jumper to close the LED and save power

The two I2C connectors are wired in parallel to the same bus.

Copyright © 2020-2025 FoBE Studio

**FoBE**

## 0.42 inch SSD1315 Oled Module

