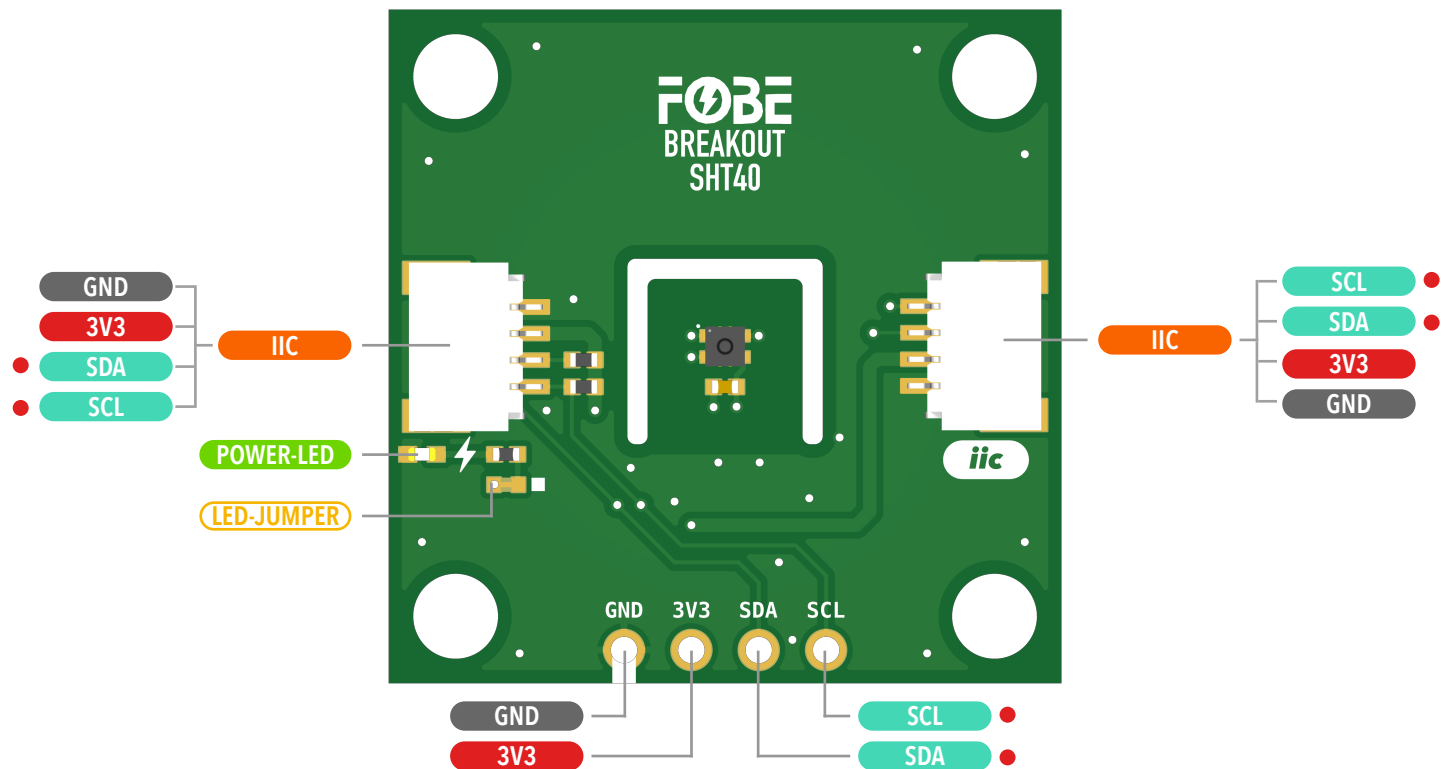


Breakout SHT40

Temperature Humidity Sensor Module

- 3.3V IO Operating Voltage
- ⚡ Jumper Pads
- ⚡ Interface
- ⚡ Voltage
- ⚡ Function Pin
- ⚡ IC



LED-JUMPER: Physically cut the Jumper to close the LED and save power

The two I2C connectors are wired in parallel to the same bus.

Copyright © 2020-2025 FoBE Studio

Breakout SHT40

Temperature Humidity Sensor Module

