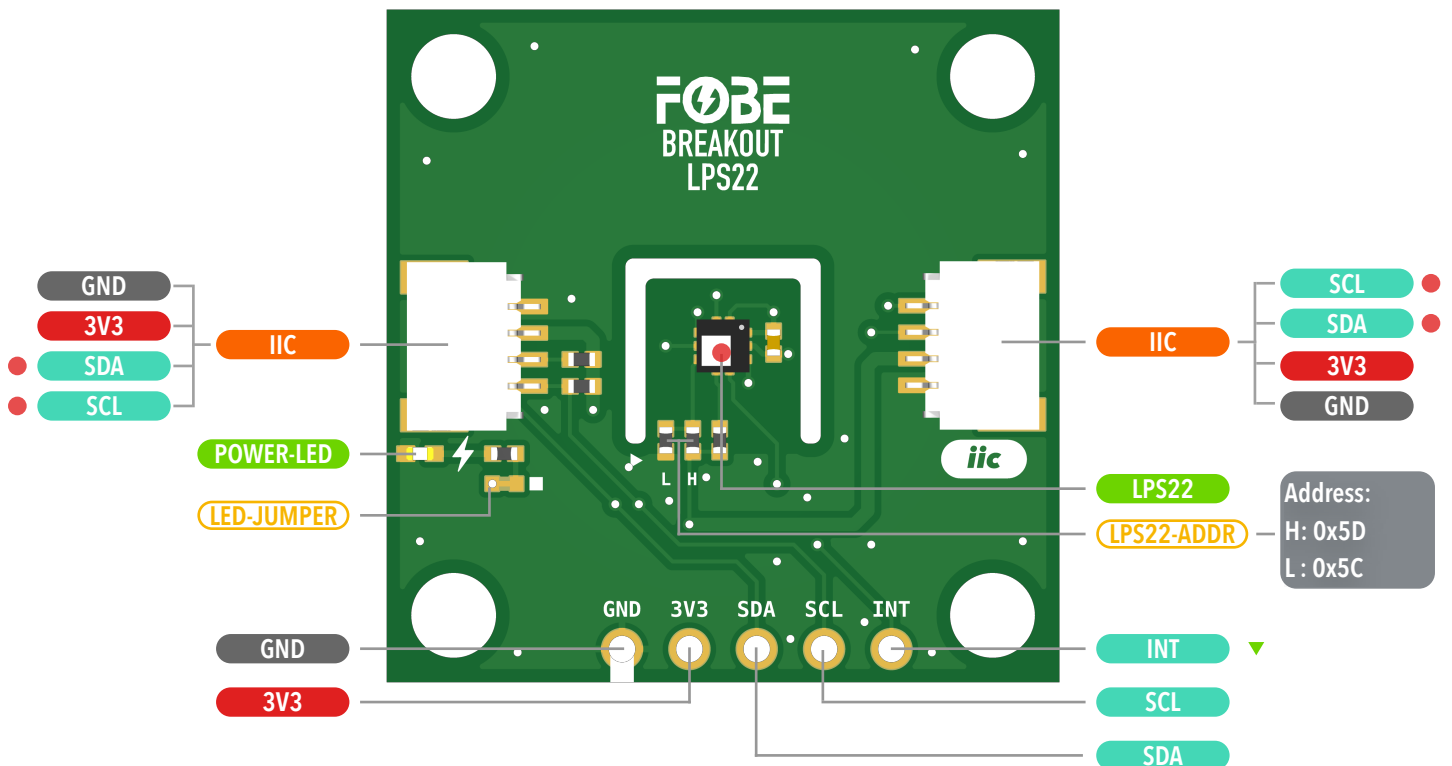


Breakout LPS22

Pressure Sensor Module

- ▼ Active Low
- 3.3V IO Operating Voltage
- ⌋ Jumper Pads
- ⌋ Interface
- ⌋ Voltage
- ⌋ Function Pin
- ⌋ IC



LED-JUMPER: Physically cut the Jumper to close the LED and save power

The two I2C connectors are wired in parallel to the same bus.

LPS22-ADDR: I2C addr selector: JUMPER:H:0x5D or JUMPER:L:0x5C.

Copyright © 2020-2025 FoBE Studio

Pressure Sensor Module

