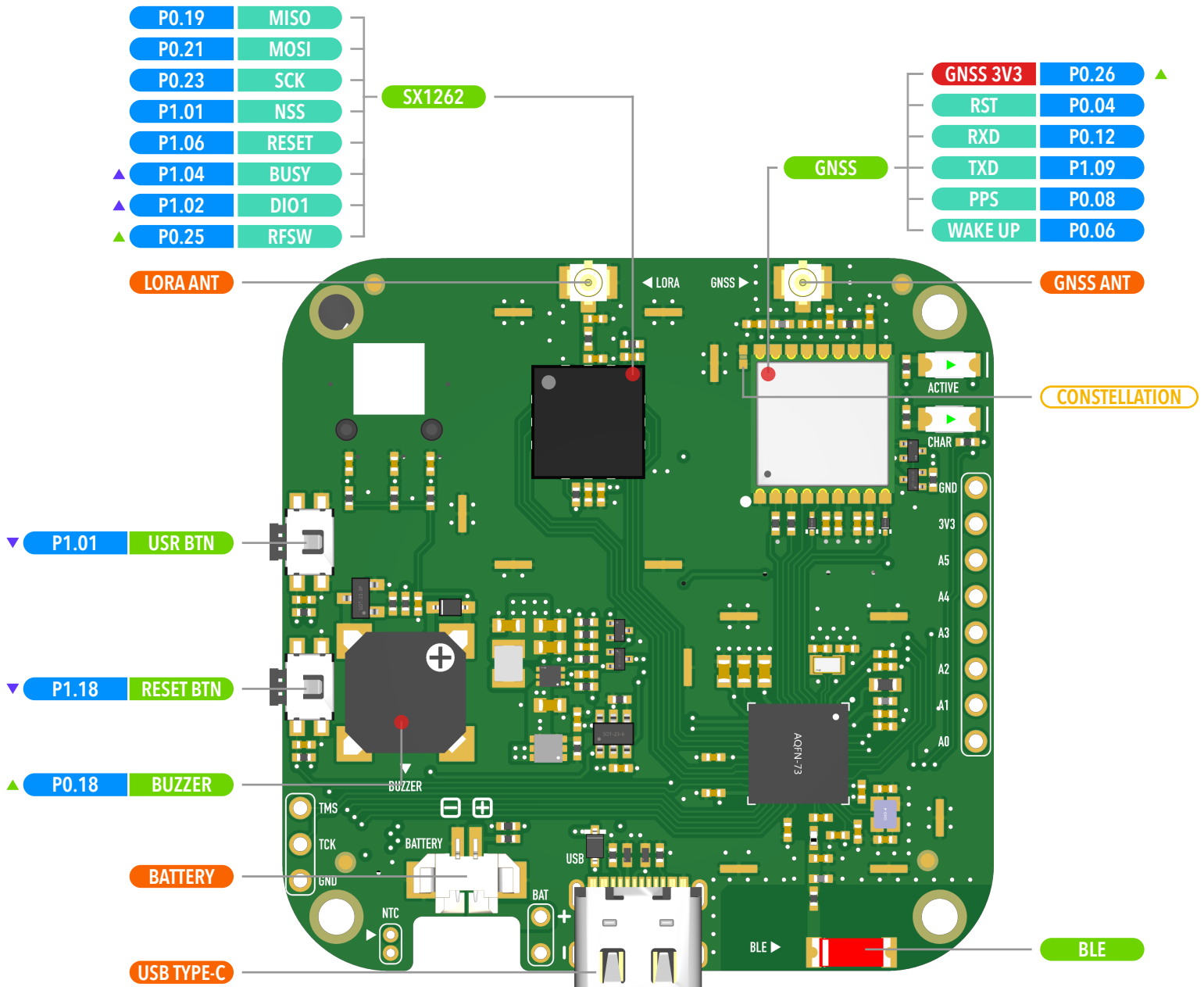


# Base Cube nRF52840 Mesh

## Development Board for LoRa Mesh

- ▲ Pull-Up to enable
- ▼ Pull-Down to enable
- ▼ Low level is detected
- ▲ High level is detected
- 3.3V IO Operating Voltage
- Jumper Pads
- Interface
- Ⓜ Voltage
- Ⓜ Function Pin
- Ⓜ IC



CONSTELLATION: Soldering or shorting to select galaxy: GPS + GLONASS or BeiDou + GPS

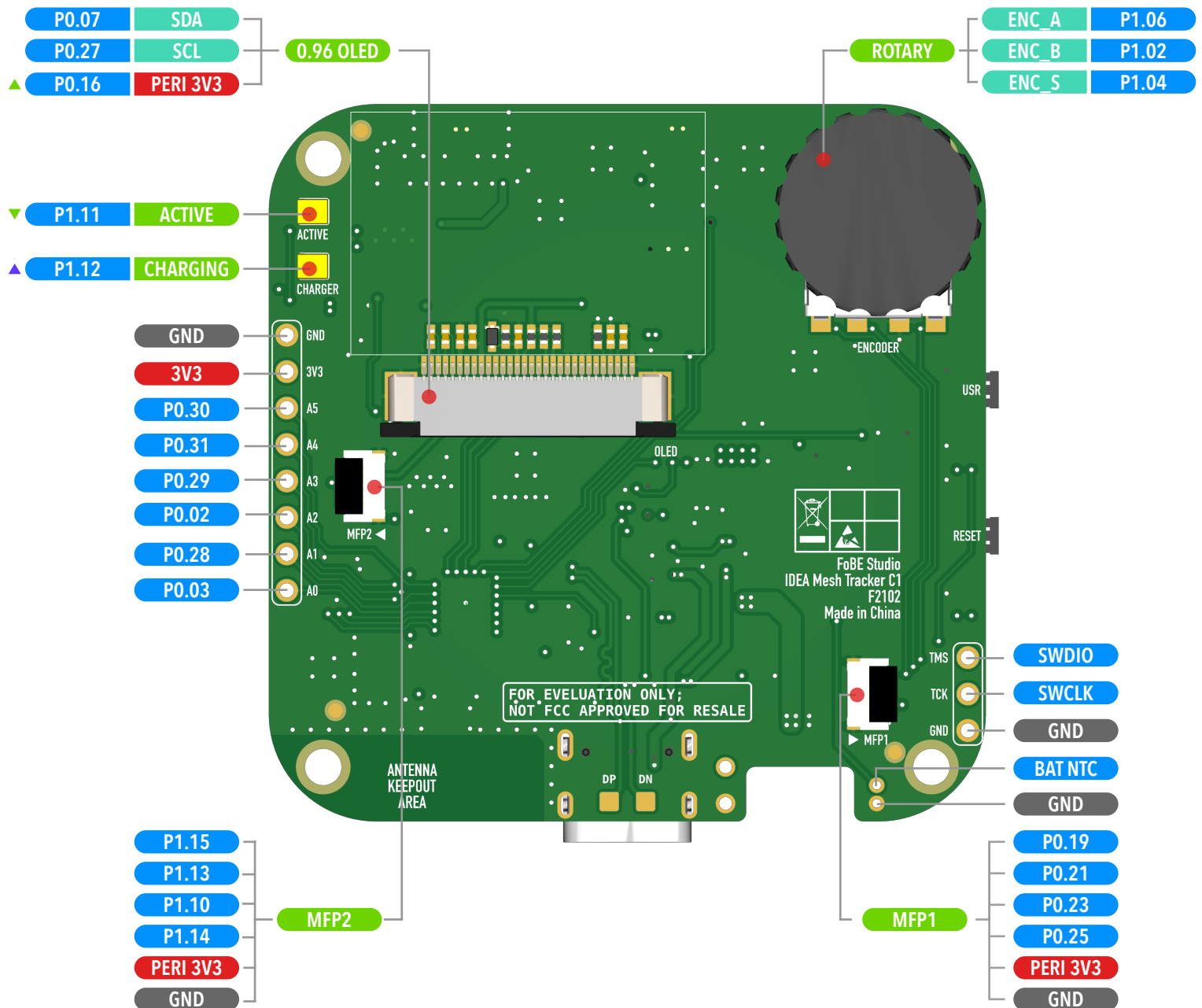
The battery voltage is measured through a voltage divider consisting of 1 MΩ (top) and 1.5 MΩ (bottom) resistors connected to the ADC pin.

Copyright © 2020-2025 FoBE Studio



# Base Cube nRF52840 Mesh

Development Board for LoRa Mesh



# Base Cube nRF52840 Mesh

Development Board for LoRa Mesh

