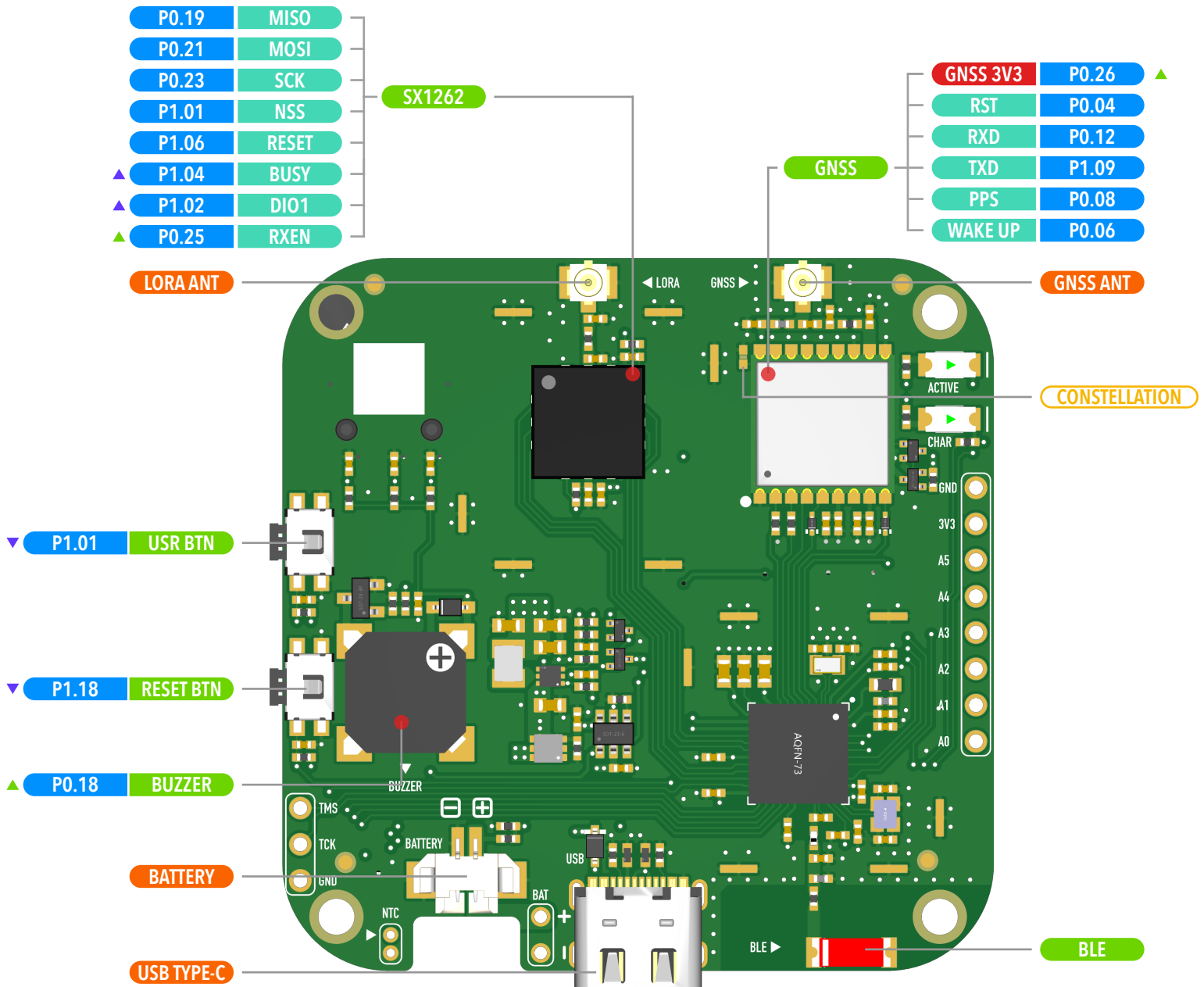


# Base Cube nRF52840 Mesh

## Development Board for LoRa Mesh

- ▲ Pull-Up to enable
- ▼ Pull-Down to enable
- ▼ Low level is detected
- ▲ High level is detected
- 3.3V IO Operating Voltage
- ⌚ Jumper Pads
- ⌚ Interface
- ⌚ Voltage
- ⌚ Function Pin
- ⌚ IC



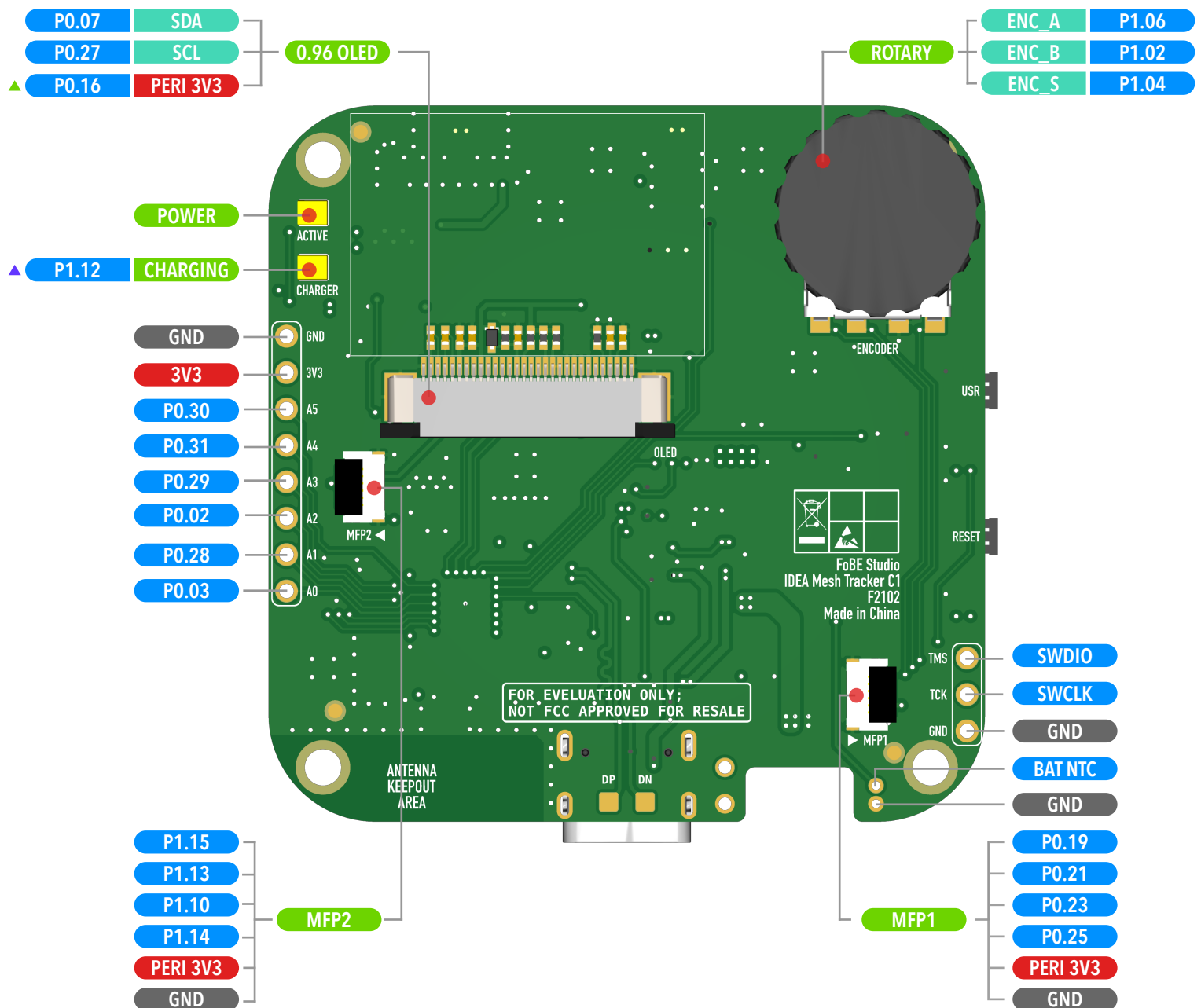
CONSTELLATION: Soldering or shorting to select galaxy: GPS + GLONASS or BeiDou + GPS

The battery voltage is measured through a voltage divider consisting of 1 M $\Omega$  (top) and 1.5 M $\Omega$  (bottom) resistors connected to the ADC pin.

Copyright © 2020-2025 FoBE Studio

# Base Cube nRF52840 Mesh

Development Board for LoRa Mesh



## Development Board for LoRa Mesh

