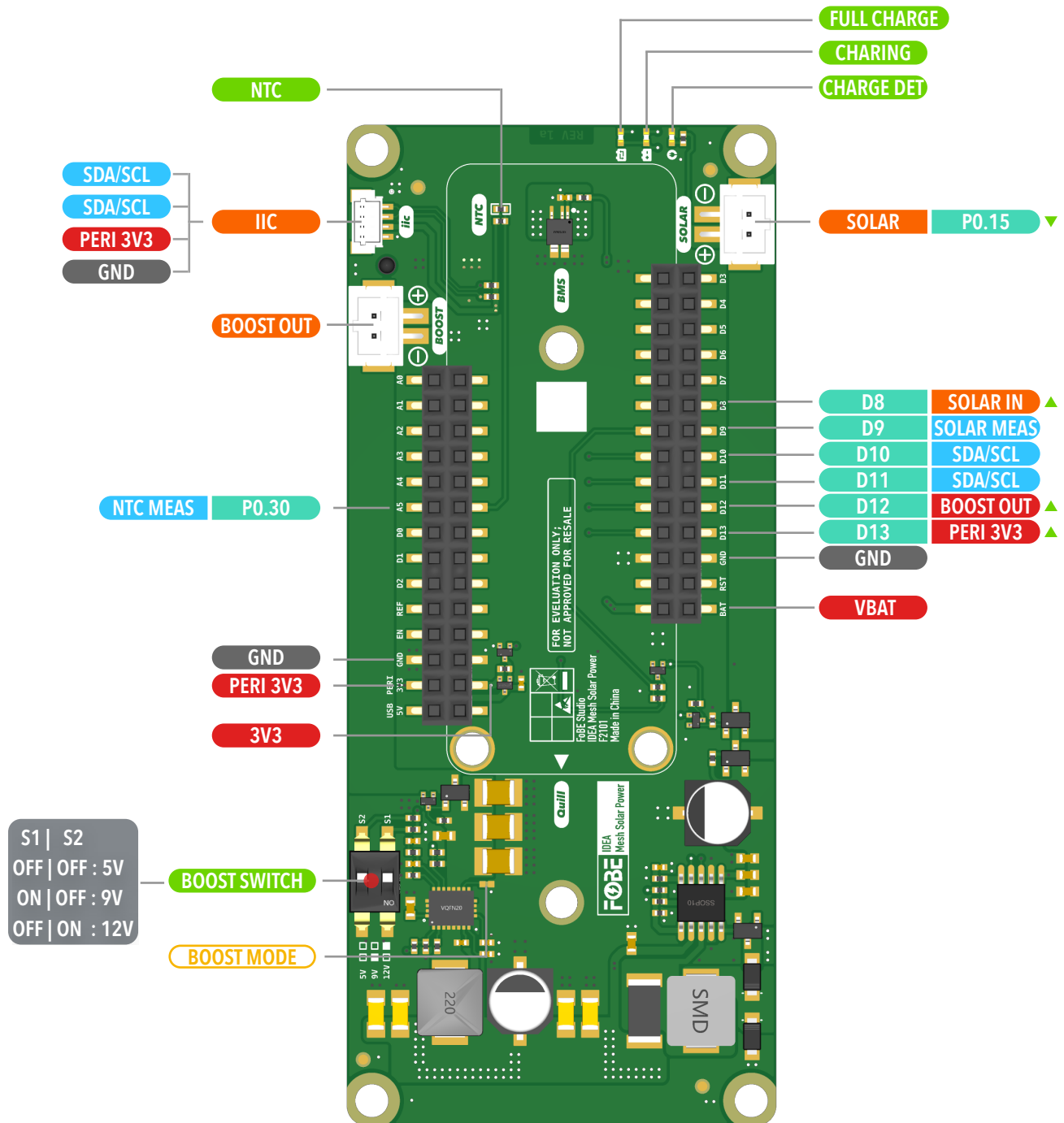


Base with Solar Power

Solar Hat for Quill Development Board

- ▲ Pull-Up to enable
- ▼ Pull-Down to enable
- 3.3V IO Operating Voltage
- ⚡ Jumper Pads
- ⚡ Interface
- ⚡ Voltage
- ⚡ Function Pin
- ⚡ IC



BOOST OUT determined by BOOST SWITCH

BOOST MODE connect: PWM mode, no: PFM mode.

IIC (SDA/SCL) is routed to D10/D11. Pinout is user-configurable.

Copyright © 2020-2025 FoBE Studio

Solar Hat for Quill Development Board

